



AX-3000 Specification

Key Hardware Features

- High brightness 15" TFT LCD & touch screen.
- 32 bit ARM9 RISC processor.
- Ultra small footprint (23cm x 23cm).
- Ultra low power consumption.
- Versatile mounting options:** counter, wall or pole.
- Base mounted PSU for easy install.
- USB memory stick interface for:** Collection of report data & EJP data. Upload / download preset data & graphic images. Firmware update.

Embedded Hardware - Benefits

- No deterioration of performance with system age or transaction volume.
- Instant power on/off.
- Transaction recall at power on/off - no lost transactions or data corruption.
- Robust system - secure from virus attack and hacking.
- Reliable solid state technology - no moving parts (no hard disk drive or fan).
- Longer lifetime - increased return on investment.
- Low maintenance and support costs.
- Remote management via inter:** remote firmware update & preset data modification is fully available without the need of anyone on site.

Peripherals & Options

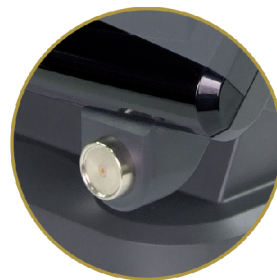
- 2 line customer display
- Color graphic LCD customer display
- Magnetic card reader
- Clerk iButton
- Cash Drawer:** DW342, DW354, DW451
- Receipt printer
- Remote order printers
- Kitchen display system
- Bar code scanner
- Weighing scale

System Integration

- Web / mobile phone ordering
- Hand held ordering - Phoenix
- Chip & pin
- Hotel PMS
- Cashless payment
- Customer loyalty (CRM)
- CCTV
- Cloud sales analysis:** UniPortal, Datasmart

www.uniwell.com

Uniwell
SOLUTIONS AT THE POINT OF SALE



Pole mount option

Specifications subject to change without notice.

Embedded Hardware - Specification

- Touch Screen** - 15" TFT (1024 X 786) 4 wire resistive
- Processor** - 32bit ARM9 RISC, 177 Mhz
- Operating System** - ThreadX real time multi tasking embedded OS
- Application Software** - Uniwell
- Networking** - 10/100 Ethernet
- Serial Ports** - 4 x RS232 ports
- USB Ports** - 4 x USB ports
- Cash Drawer Ports** - 2 x RJ11 cash drawer ports
- Tilt Adjustment** - 0 ~ 70 degree
- Dimensions** - W366 X D306 x H285-347
- Weight** - 6.8 kg
- Power rating** - DC 12V, 5A
- PSU rating** - Input: AC 100-240V, 50-60Hz, Output: DC 12V (PSU comes with the machine)
- Internal PSU** - Yes mounted in lower base unit

To find out more

For more information on the AX-3000 and the full range of Uniwell products please visit: www.uniwell.com

To find details of your nearest Uniwell reseller, please contact us using the following details:

Uniwell Corporation
4-32, 1 Chome
Doshin, Kita-ku
Osaka, 530-0035
JAPAN

Tel: +81-6-6353-7021
Fax: +81-6-6352-7104
Web: www.uniwell.com



EPOS Systems

AX-3000

A New Generation of POS Terminal



Bar



Restaurant



Retail



Cafe



Quick Service

www.uniwell.com

All in one POS System

The AX-3000 all in one POS solution that combines the rock solid reliability and performance of embedded POS terminals with the flexibility of PC based technology.

With decades of experience the AX-3000 brings control back to your business and provides innovative tools to enhance customer service, speed up operations, improve cash control, increase efficiency and ultimately increase bottom line profits.



PCPOS
Hardware



Cash
Registers



EPOS
Systems



Software



HandHeld



Peripherals



EPOS Systems



PCPOS
Hardware



Cash
Registers



EPOS
Systems



Software



HandHeld



Peripherals

The AX-3000 comes as standard with a simple stock control system.



The in-built database keeps track of what customers are ordering.



Customers can pre order & pre pay for items using their mobile phone.



The AX-3000 can be linked to the Hand Held Ordering Terminal.



Flexibility, Speed & Ease of Use

The AX-3000 software is the result of over 30 years EPOS experience. The system can be configured to suit a wide range of different market sectors:

- Bars, Pubs & Nightclubs
- Restaurant – Fine Dining & Casual
- Cafes & Deli
- Quick Service – Fast Food & Take Away
- Catering & Education
- Hotels
- Retail

The unique hardware design will deliver lightning fast performance year after year without the need for expensive hardware or software upgrades. Maximizing your return on investment.

The graphical user interface can be customized to suit each individual business, simplifying operations and minimizing staff training time and cost.

Cash Control

Unfortunately, nearly all retailers that handle cash transactions are affected by cash discrepancies. The AX-3000 has been designed to help you control your cash and your profits. Cash control starts with operators having a unique and secure login device ie an i-button.

The AX-3000 records every transaction that an operator makes and provides a range of reports that will enable you to identify fraud. Simple end of shift cash declaration procedures compare computed sales values with actual cash in drawer values - highlighting discrepancies.

Security

For the ultimate in security the AX-3000 can be linked to a CCTV system that records line by line transaction data with live video footage of the POS terminals in operation.

As a lower cost alternative it is also possible to analyze live transaction data, based on pre-defined criteria, using Uniwell.net Alert software. For example, the system could be configured to immediately text or page the manager every time a void over a certain pre-programmed amount is done.

Simple Stock Control

Many businesses cannot justify the time and resources to manage a fully featured stock control system. The AX-3000 comes as standard with a simple stock control system that, with minimal effort, will provide accurate stock control for the key product lines.

Management Information

A wide range of detailed reports provide managers and owners with the information they need to control and drive the business forward. The AX-3000 can be configured to automatically send sales data (in XML format) to a remote FTP server or Uniwell's web based reporting service. DataSmart and UniPortal.

Labour Cost Control

The system can be configured to ensure that operators have to clock in and out of the system before they can start their shift. The clock in/out times can be used to calculate hours worked and labour cost per employee.

Mobile Phone & Web Ordering

One of the unique features of the AX-3000 is that it can also be configured to accept orders directly from a customer's mobile phone or web orders if used in conjunction with our mobo2go ordering system.

Imagine your customers delight at being able to pre order and pre pay for items having specified the time and store that they wish to collect their order.

Improved Promotion Control

A range of multi buy, combos and meal deals can be configured. In addition it is also possible to schedule price changes for "happy hour" style promotions. It is important to be able to configure and run promotions but it is even more important to be able to monitor the impact of the promotion. The AX-3000 provides detailed pricing reports that show the effect of promotions.

Customer Loyalty

The AX-3000 can be configured to run a simple low cost loyalty system that will allow you to provide loyalty cards to your customers and provide them with preferential pricing and discounts. The in-built customer database keeps track of what customers are ordering and when they last ordered.

Table Management

In a busy restaurant it is vital that tables are managed efficiently to ensure good customer service and optimize table turn times. The graphical table plan can be configured to match your exact table layout and changed to accommodate new layouts.

At a glance, waiters can see who is sitting at which table, the order status of each table and the dining duration.

Hand Held Ordering - Phoenix

Phoenix is the handheld application software that runs on Android devices, such as smart phones, tablets, etc. Phoenix is purely designed to work with ONLY AX-3000 so that maximum compatibility is offered.

Phoenix order entry software is optimized for Android devices to offer easy-to-use features that can be intuitively learnt, thus Phoenix is quite free from concept of existing solutions and give users more free feeling and fun of operations.

- Preset data of AX-3000 to be used on Phoenix
- Security protection by license code generated by MAC address
- Set Menu
- Condiments, Cooking Instructions
- Picture on PLU list
- Split bill
- PLU Repeat
- Clerk Open Track List
- Close/Media-Close by "Gesture Entry"
- Media Close
- Mobile Printer (Bluetooth Connection)
- Flexible Printer Selection

Back Office Modules

- EPOS Sales
- EPOS Office
- Uniwell.net Alert
- Lynx

Head Office Modules

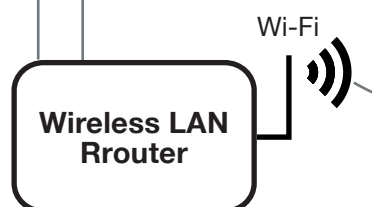
- EPOS Office Head Office
- DataSmart web based reporting
- UniPortal



AX-3000 Phoenix Server



AX-3000



Order Information

